



my cancer manager

What patients need,  
and current apps don't deliver

Simple Usage

Tailored to  
different phases  
of disease  
journey

Holistic view  
over disease  
and wellbeing

All data in one  
place

Sharing of  
selected data  
with family and  
doctors

Clear and safe  
data storage

Organize daily  
life



Meet cama,  
your personal cancer  
manager.

Easy onboarding,  
with or without registration.

All your cancer management needs,  
at a single glance.

Keep track of your quality of life,  
and be prepared for your doctor's visit.

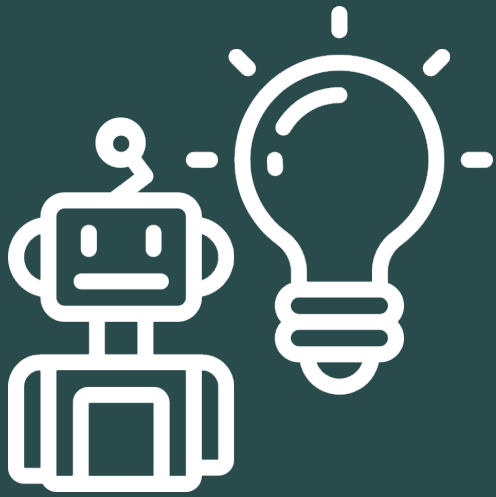
Store all your relevant documents in one place and securely share as you like.



Link your health status to events like treatments, lab values and activity.

Add and configure new modules tailored towards your particular needs.

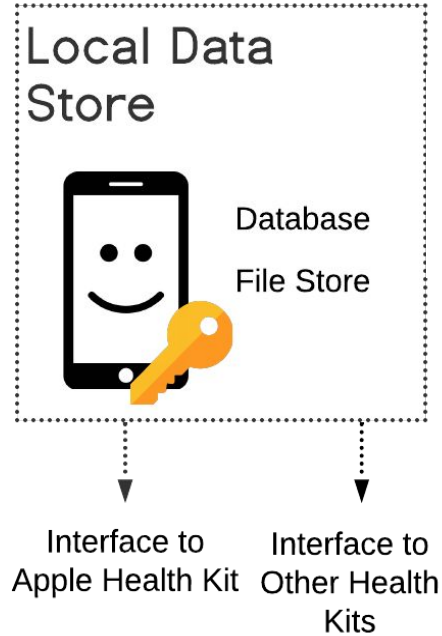
Fine-grained control over  
who can see or edit your data.



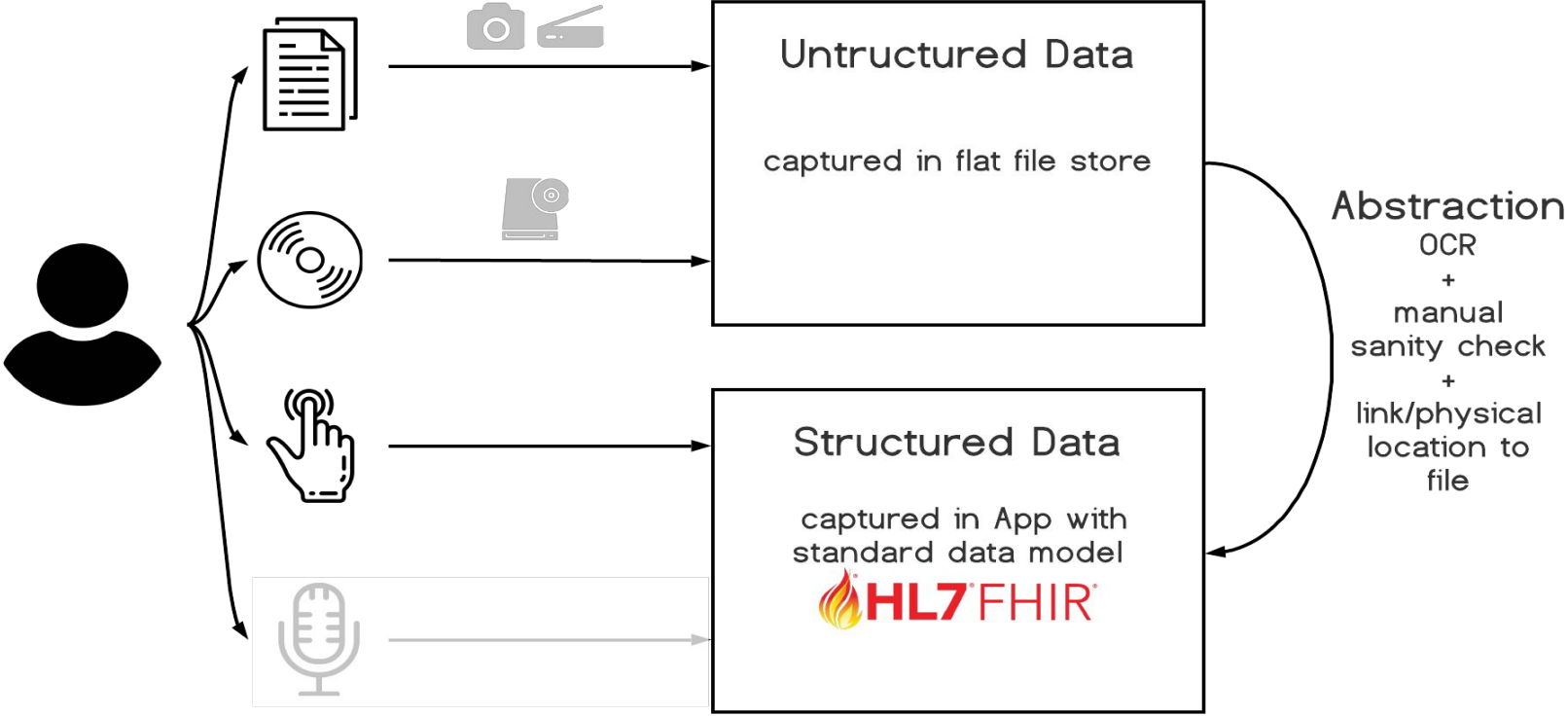
Technical Details

# User has full control over their data

---



# Flexible and rich input of medical data by user



# Dedicated applications for mobile and desktop

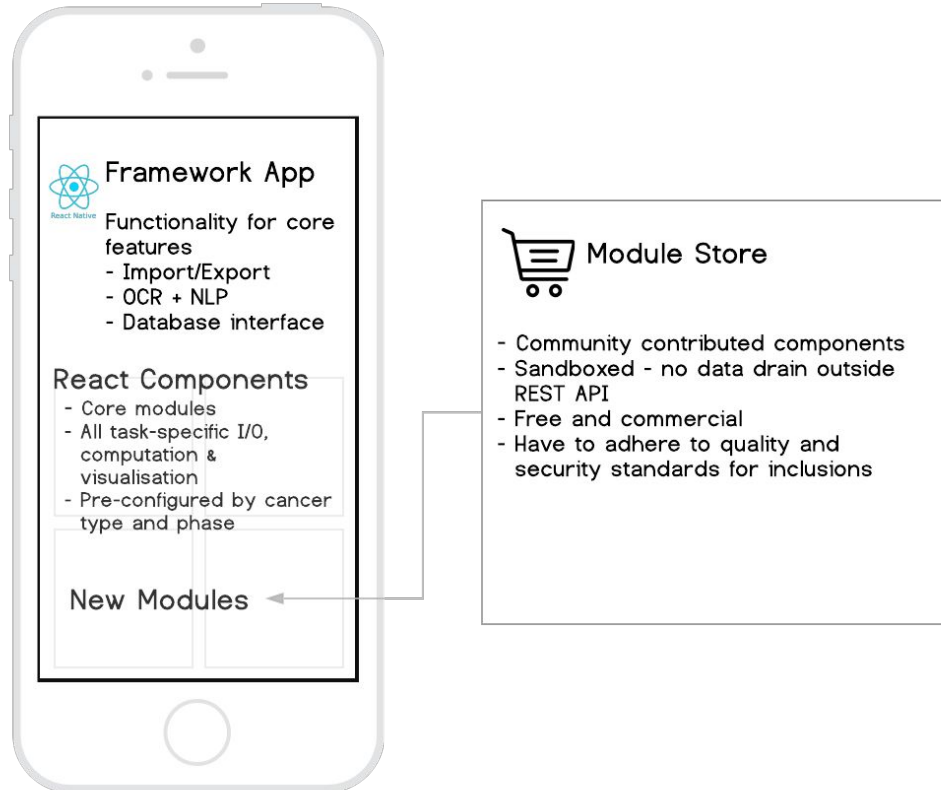
cama app



React Native  
(iOS & Android)

- \* Your daily companion
- \* All data at your fingertips
- \* Reminders and logs
- \* Extensible by custom modules

# Extensible software architecture using React Native





# Outlook and next steps

Architecture build for future development with data security at its core

- Data model based on global FHIR standard
- App easily extensible by modules
- Quickly build charts for web viewer

Implementation of abstraction of data from unstructured reports will not be trivial

- Diverse layouts, spelling and content of reports

Developer community building

- Can we mix volunteer and commercial developers?



# Discussion / Q&A

Team "Gin"

Charlotta Fruchtenicht, Sebastian Wolf, Matthias Reich, Ivo Leist, Johannes Hilgert, Thomas Hopf

# Community building

interaction patient - developer - how?

# Outlook / open questions

- data protection, certifications, medical device etc.

# Web portal for data retrieval

do we want to present this explicitly?

e.g. to view documents on your computer

# Wireframes

- Onboarding
- Mood/physical state monitoring and visualization
- Medication/treatment reminders and planning
- Interlinking of data from state and treatment monitoring
- Document management, data retrieval, sharing with doctor (include printing)

## Other ideas:

- "Onboarding" after diagnosis - checklist "how not to die", therapy effects, background information
- (Community - "patients like me")